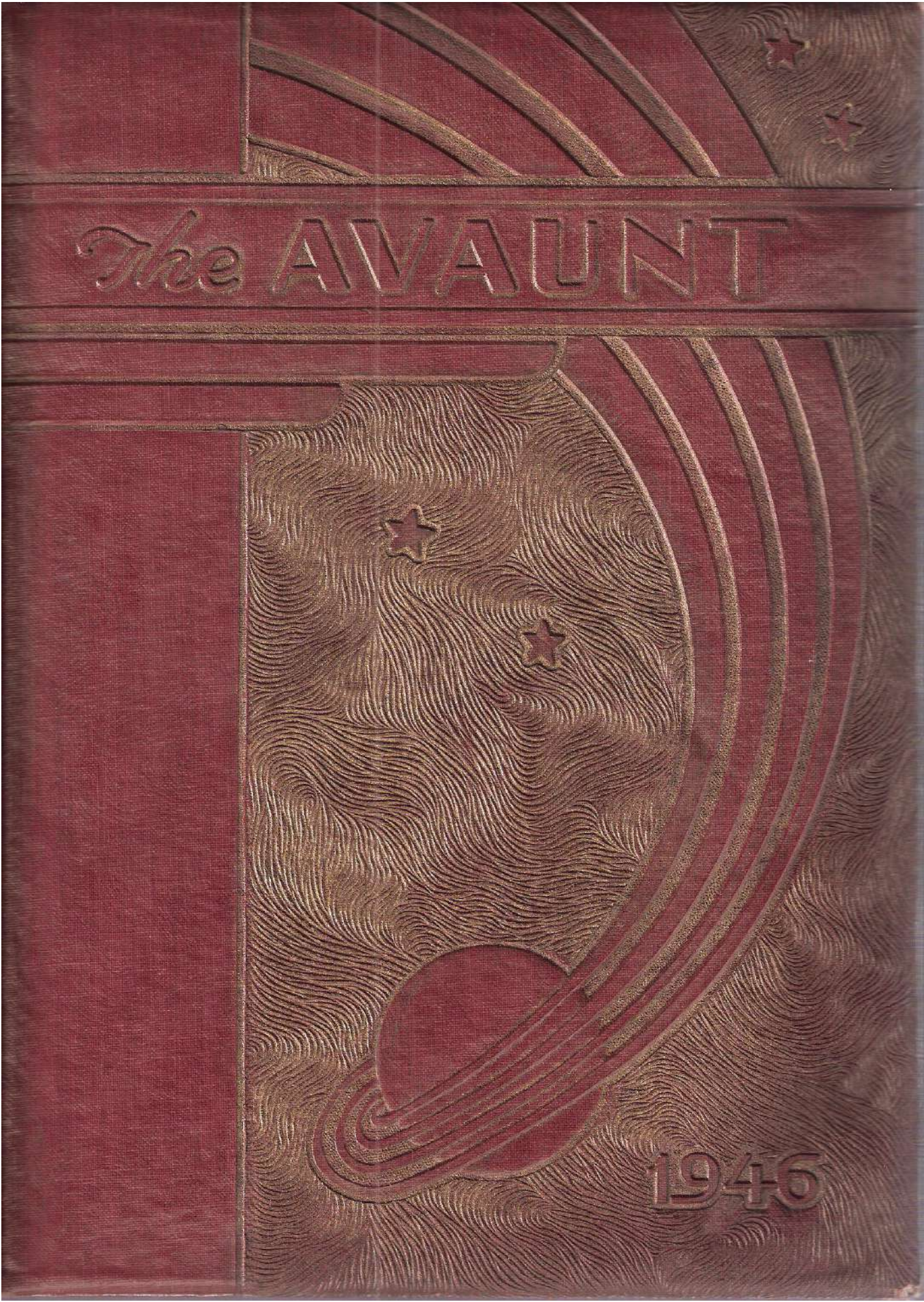


*The* AVAUNT

1946



The

# Craunt



# 1946

PUBLISHED BY THE STUDENTS OF CASSVILLE HIGH SCHOOL



Ray Rowland  
AVAUPT EDITOR



Anne Peterson  
ASSISTANT EDITOR

## Foreword

"OFT' IN DREAMS WE'LL BE RETURNING  
TO CASSVILLE HIGH....."

Life is so ordained that once our high school days are over we can never return to live them again, even for just one glorious moment. Each goes his separate way and time slowly erases from our memory the pictures of those who were once so close to us.

With your annual you can change this situation. By turning the pages you can turn back the years and see each person, each event--the blond girl in the front row; the deafening roars of the pep assembly; the constant struggle to conquer the verbs, the unknown quantities, 1492 and 1775--as vividly as you saw them on any day in high school.

## Annual Staff

Mary Ingram--General Manager;  
Joe Freddy--Business Manager;  
Mr. Thompson--Business Advisor;  
Jeanette Salyer, Betty Flood,  
and Betty Bryant--Departmental  
Editors; Bill LeCompte, Letha  
Buddick, and Billy Hall (not in  
picture)--Typists; Mrs. Hodge--  
Faculty Advisor.





*Mary Ingram - Awards Queen*

*Board of Education*



# The Superintendent's Letter....



CHAS. R. RIDDLE  
President of Board

G. E. TRUITTE  
Clerk of Board

## Cassville Consolidated Schools

TOM M. CARTER, Superintendent

CASSVILLE, MISSOURI

To the Faculty, Students, and Patrons of  
the Cassville Schools:

I appreciate your cooperation in helping to get our school program underway this year. Your demonstrated school spirit has been very pleasing. I am convinced that as a community you want to offer your boys and girls every educational opportunity that is within your power. You realize, as well as I do, that we live in an ever-changing society, which constantly requires our setting new goals. May we have vision and willingness to make changes and additions as they are needed.

Our educational system is a service organization. We educate in order that the individual may better serve his home, his community, his nation, and the world. It is the aim of our educational system always to serve the needs of the majority and also to serve the needs of individuals whenever possible.

The real measure of education, as far as the individual is concerned, is the amount of desirable change that is produced in the individual which is reflected in the community in which he lives. Let us never attempt to measure education in terms of dollars and cents because character, citizenship, health, hair play, leadership, etc. cannot be measured in terms of dollars and cents.

One of our former American statesmen, Newton D. Baker, once said, "He who is educated today, stops learning tomorrow, is uneducated the day after."

Sincerely,

*Tom M. Carter*

*The*

# SPOTLIGHT

*Is On*

*The Student Council*



Our council, made up of the student president, student representative, and the four class presidents, is the spark which kindles assemblies, elections, and various other extra-curricular activities within the school. Mr. Thompson acts as the advisor, while the superintendent sits in to represent the faculty.

Mary Ingram is student council president, Hollis Baker is vice-president, and Joe Freddy is secretary.





IRIS WISELEY



CHARLES GALYEN  
Dramatics Club  
Softball  
Glee Club



MARY TOWE  
Softball  
Volleyball  
Drum Corps  
Glee Club



BILLIE HALL  
Dramatics Club  
Avaunt Staff-46  
Glee Club  
F. F. A.



J.B. PADGETT  
F. F. A.



# Seniors



MARY INGRAM  
Student Representative  
Student Council Pres.  
Glee Club  
Avaunt Staff-44,45,46  
Avaunt Queen-44,46  
Soph. Vice-Pres.  
Peppy Dozen  
Junior Play  
Operetta  
Dramatics Club  
Home Ec. Club  
Drum Corps  
Band  
Senior Play



JOE FREDDY  
PRESIDENT  
Glee Club  
Dramatics Club  
Soph. Class Pres.  
Junior Play  
Avaunt Staff-46  
Student Council  
Senior Play  
Band



ANNE PETERSON  
SEC.-TREAS.  
Band  
Glee Club  
G.C. Accompanist  
Avaunt Staff-45,-46  
Operetta



BOB RUSSELL  
VICE-PRES.  
Basketball  
Softball  
Student Council  
Junior President  
Junior Play  
Glee Club



BOB ALLISON  
Softball  
F. F. A.



THELMA BURBRIDGE  
Dramatics Club

*Dear Mrs. Thomas,  
I certainly have  
enjoyed knowing and  
hoping our friendship  
will continue. Love,  
Betty*



BETTY L. TUCKER  
Volleyball  
Glee Club



DOYLE YOUNG  
Softball  
F. F. A.



DOROTHY WILLIARD  
Glee Club



DON HAYES  
Softball  
F. F. A.





OLIVE PATTON  
Dramatics Club



RAY ROWLAND  
Glee Club  
Operetta  
Dramatics Club  
Basketball  
Freshman President  
Annual Staff-44,-45,-46  
Junior Play  
Senior Play  
Avaunt Editor  
Peppy Dozen  
Cheer Leader  
Band



LETHA RUDDICK  
Glee Club  
Volleyball  
Carnival Queen '45  
Annual Staff '46  
Operetta  
Spanish Club  
Latin Club  
Tennis  
Senior Play



DOYLE WILLIAMSON  
F. F. A.  
Glee Club  
Junior Play  
Basketball  
Peppy Dozen  
Operetta  
Dramatics Club



MARGARETTE SMITH  
Operetta  
Glee Club  
Peppy Dozen  
Basketball Queen-45  
Home Ec. Club



MARTHA LEWIS  
Glee Club



PATRICIA TURNER  
Glee Club  
Drum Corps  
Dramatics Club  
Operetta  
Senior Play  
Home Ec. Club



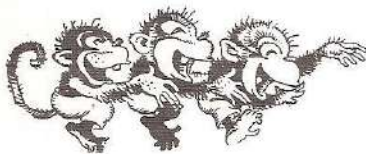
HOLLIS BAKER  
Basketball  
Softball  
Football  
Student Council  
Student President  
Junior Play  
Glee Club



IRENE DILBECK  
Dramatics Club  
Glee Club  
Drum Corps  
Junior Play  
Peppy Dozen  
Operetta



CARL HANCOCK  
F. F. A.  
Softball



ERMA DEAN REDDING  
Dramatics Club



INEZ LONG



CHARLES THOMAS  
F. F. A.  
Softball



RUBY SMITH  
Glee Club



J.D. BLYTHE  
Softball  
Junior Play



LORETTA BROOKS



CLARABELLE OWINGS  
Dramatics Club  
Junior Play



CHARLES ENGLAND  
F. F. A.  
F.F.A. Basketball  
F.F.A. Softball  
Softball  
Glee Club



FREDALEENE PRIER  
Glee Club  
Operetta



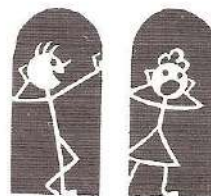
TIM RICH  
Football  
Basketball  
F. F. A.  
Glee Club  
Orchestra



PAULA JEAN KOST  
Dramatics Club  
Junior Play  
Senior Play  
Band  
Glee Club



DORIS LESTER  
F. F. A.  
Softball



BETTY BRYANT  
Junior Play  
Drum Corps  
Home Ec. Club  
Dramatics Club  
Glee Club  
Operetta  
Avaunt Staff-'45 '46  
Senior Play



ADELINE LOFTIN  
Dramatics Club  
Glee Club  
Volleyball  
Drum Corps  
Junior Play  
Senior Play



BETTY FLOOD  
Glee Club  
Operetta  
Volleyball  
Jr. Pres.-Seligman  
Junior Play  
Avaunt Staff '46  
Band



LENORA BRANDON  
Dramatics Club  
Junior Play



ONA BUNCH  
Glee Club  
Operetta



HAZEL SMITH  
Softball  
Volleyball  
Glee Club



RUTH STAPLETON  
Glee Club  
Dramatics Club



ROBERT HOPKINS  
F. F. A.  
F.F.A. Basketball  
Softball



HAZEL HICKS  
Drum Corps  
Glee Club  
Operetta



NORMA CRAFT  
Softball  
Volleyball  
Dramatics Club  
Glee Club



CLARIBEL ENNIS  
Drum Corps



MARY ALICE ARNOLD  
Dramatics Club  
Glee Club  
Drum Corps  
Operetta



GENE LOVELL  
F. F. A.  
Softball  
Basketball  
F.F.A. Basketball  
F.F.A. Softball



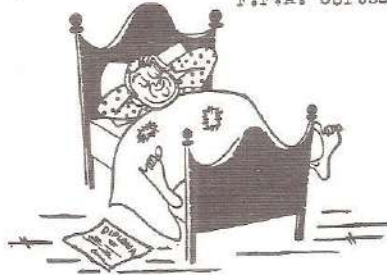
JO ANN EDMONDSON  
Dramatics Club  
Glee Club  
Home Ec. Club  
Drum Corps  
Avaunt Staff-45  
Junior Play  
Senior Play  
Debate Team  
Operetta



ARVILLA STEVER  
Dramatics Club  
Glee Club  
Drum Corps  
Junior Play  
Operetta



LUCILLE COOPER  
Glee Club  
Dramatics Club



*Best Wishes  
Bunnies*



ROSALIE GIBBONS  
Glee Club  
Dramatics Club  
Drum Corps  
Operetta  
Junior Play  
Senior Play  
Home Ec. Club



MARIAN BABB  
Junior Play  
Glee Club  
Dramatics Club  
Drum Corps  
Operetta  
Basketball Queen '44



BILL LECOMPTE  
Glee Club  
Dramatics Club  
Junior Play  
Debate Team  
Operetta  
Band



BERNICE SWAFFORD  
Glee Club  
Band  
Dramatics Club



BETTY HANKS  
Dramatics Club  
Glee Club  
Drum Corps



LAVON DODSON



MARION COOPER  
F. F. A.  
Softball  
Peppy Dozen



MORRIS SIMS  
Glee Club  
Softball  
Senior Play



BERNA JEAN SLINKARD  
Glee Club  
Softball  
Volleyball  
Dramatics Club



DON COOPER  
F. F. A.  
Glee Club  
Softball



J.T. TAFF  
Dramatics Club  
Senior Play  
F. F. A.  
Softball  
Basketball



MARTHA J. RUTTER



JOHN BLYTHE



NORMA LEE TALBURT



CHARLEY BAKER



PEGGY HUTTON

# Juniors



BETTY ASH



LEONARD STANSBERRY  
PRESIDENT



DON EDIE  
VICE.-PRESIDENT



CHARLES TRUHITTE



GEORGE SKELETON



FRANCES COX  
SEC.-TREAS.



JAMES RAY



JUNIOR PURDOM



JACKIE RICH



BILL STINTZI



DORIS SEELY



BILL FOGG



ALICIA CHUMBLEY



FRANCIS MATHIS



JEANETTE SALYER



JAY DEANE COX



GENEVA BAIL

*Just one of those students  
Geneva*



MARY PLUMMER



JACKIE TUCKER



LILAS TOWE



FRANK SWANSON



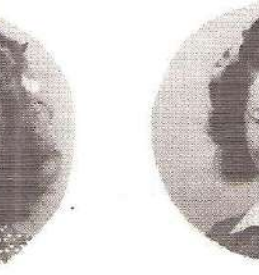
WILMA JEAN KIMBALL



JACK BRANDT



ERNIE LOU HENBEST



LORENE COONES



MAX FIELDS



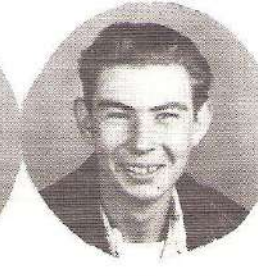
EMOGENE WHISMAN



JOE BISHOP



BARBARA BRADLEY



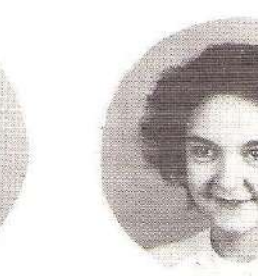
RUSSELL EASELY



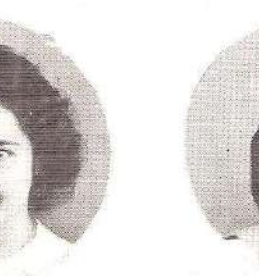
WILLA DEAN HORNER



W. D. FERRIMAN



LOUISE ROBBINS



FRANCES SANDS



FRANK MOUDY



WILMA PLUMMER



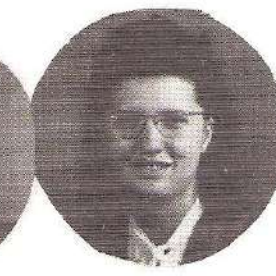
JACK LOFTIN



WILLA J. PAINTER



EDGAR STUMPPF



KATHRYN ENNIS



DEREASE STARKEY



HAROLD TIMMONS



DONNA LEE MEADOR



BUFORD BLYTHE



GILBERT GARLAND



DELMAR WATSON



FRANCES WILEY



BILL PLUMMER



FRANCES DOANE

*I have enjoyed  
being in school  
and having  
but I hope  
to see  
you soon  
Hilma*



FLETA MAE HANKINS



CALVIN HOLMAN



WILMA CUNNINGHAM



BILL BARBER



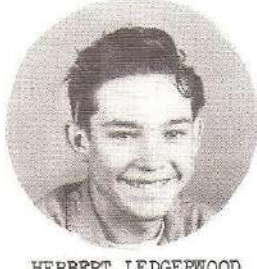
WILMA BALL



CHARLES WILLIAMSON



VERA MAE WHISMAN



HERBERT LEDGERWOOD



RAMONA PETERS

*I have enjoyed  
very much being*



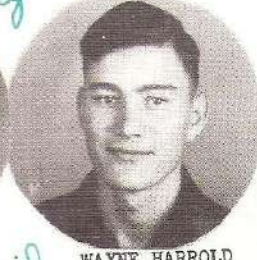
BONNIE LEE



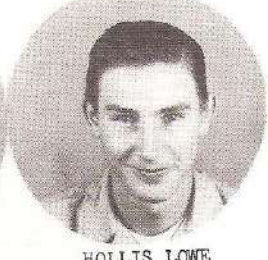
EUGENE BROOKS



HELEN DRYER



WAYNE HARROLD



HOLLIS LOWE

*one of your pupils  
Dorothy Lucks to a  
well teacher Helen*

# Sophomores



FRANCES NEELY



EVELYN THOMAS



GLENNON HORNER  
PRESIDENT



PHYLLIS TURNER  
SEC.-TREAS.



MARY BETH BRADLEY  
VICE-PRESIDENT



MADDEAN O'MALLEY



TOM NICOLL



EULA MAE DOTSON



MARTHA INGRAM



DONNA LEE HORNER



RETHA JEAN HENBEST



LEON EDIE



DEVERE LE COMPTE



DICK FOGG



WILMA BECK



EMMA CARTERMAN



EDNA MERYL SMALLEY



DARLENE BEESON



HENRY SHEETS



OVA COATNEY



PEGGY HOPKINS



BILLIE FISHER



LAVONNE HAWK



ROBBIE WHISMAN



ROBERT TUCKER



CHARLES SANDERS



OPAL COOPER



DORIS HARROLD



JEAN HANKINS



LOUISE EATON



BILLIE RAE HUDSON



BEVERLY LONG



YVONNE COCKRELL



LOUISE GREEK





DONALD BLYTHE



MARGUARY PAINTER



SHIRLEY FARWELL



CHARLES CURRY



NORMA LEE COOPER



ALFRED TREAT



LAVINA SLINKARD



SANFORD GARLAND



NOVETA BROCK



WILLARD COOPER



EMMA JEAN ADAMS



WANDA EASLEY



JOY EPPERLEY



EVADNA BEESON



DELMAR HAMMONS



DONALD CRAIG



OPAL SMITH



BILLIE CHANNEL



LORRAINE ALLISON



VIRGIL HILTON



HELEN TOWE



RONNIE REAMS



ETTA MAE HOWARD



VARL BALL



JEAN PRICE

# Freshmen



FRANKIE HOPKINS



JOHN OWINGS



BEN SALYER  
PRESIDENT



BEVERLY ANN JACQUES



BESSIE FAYE BURBRIDGE



EVELYN DRYER  
VICE-PRESIDENT



LARRY BLYTHE  
SECRETARY-TREASURER



DONALD LEE



DORMAN STURGELL



LOUISE TUCKER



GERALDINE TALBURT



BONNIE BLACK



JOY MARLANEE



HOWARD WALLACE



JEAN WILLIAMS



REX EDMONDSON



THELMA LONG



DOROTHY K. STARKEY



DOUGLAS RAINWATER



EMOGENE ANDERSON



CLAY COOPER



FLOYD TUCKER



BUD PILANT



EARL DEAN HODGE



MAURICE BRADFORD



WANDA COCKRELL



KENNETH WHORTON



JEWELL POWELL



R. L. SMITHSON



RAY TURNER



BOBBIE MORAN



DEAN DAVIS



GLADYS TUCKER



BILL PAINTER



VERA HARRIS



CALVIN SLINKARD



NANCY JOSLIN



FRANCES NEWMAN



DERRAL LEE



AGATHA EPPERLY



JACK MORTON



LEWIS BOWSHER



JESSIE SPAIN



OLLIE HOLMAN



DALE MILLER



PEGGY HANKINS



PAULINE NEWTON



MAX EDMONDSON



ALICE HUDSON



CHARLES STANDSBERRY



CALVIN RUSSELL



REBA STOCKTON



CHARLES PREDDY



MARJORIE BANKS



VIRGINIA ENNIS



DOLLIE MAE CHANNEL



BONNIE CHAPMAN



MARJORIE RHODES



BETTY JO TAFF



DORIS BRADFORD



DOROTHY BRADFORD



KATHALEEN MOTE



BARBARA NEELEY



LUCILLE SNYDER



JOYCE SIVADON



DOROTHY HENSON



MARJORIE HILBURN



FERN WOLFE



HAZEL JEAN WALLACE



GERALDINE HORNER



MARIE BECK



MILDRED BEESON



RETA STOCKTON



JESSIE FRED SMITH



BETTY LOU ANTLE

Dear Mr. Thomas,  
Even though I have not  
had any classes under  
you I am sure you  
would be a swell  
teacher. I want to  
thank you also  
for helping us put  
the Senior class  
play over.

Joe

Joe Preddy → Best Citizen

Dear Mrs. Thomas  
I have enjoyed  
very much being one  
of your students. I  
will always remember  
you. Best of luck  
always.  
Peggy

Peggy Hutton - Carnival Queen



*Hollis Baker - Student Body President*



# Music



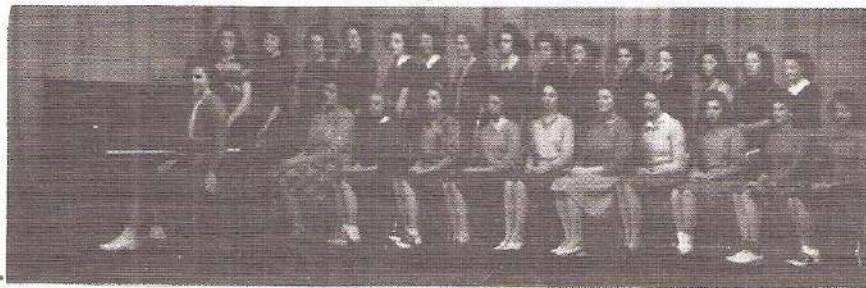
## Girls' Glee Club

Three days each week this group of girls treads an uncanopied walk from the high school to the north section of the gymnasium for a fifty-minute session of "ah's" and "oh's" and an acquaintance with Bach, Brahms, or Tschaiikowsky. Other music used for enjoyment are selections from musical comedies, light opera, and a few of the better popular songs. This organization has become an important part of the school, through its willingness to assist in any school activity.

Accompanists - Anne Peterson and Mary Louise Ingram  
Soloists - Soprano, Paula Jean Kost  
Alto, Mary Beth Bradley  
Piano, Mary Louise Ingram

### FIRST YEAR GLEE CLUB

Twenty-five girls, most of them Freshmen, make up this section of the Glee Club. They are: Nancy Joslin, Frankie Hopkins, Joyce Sivadon, Lavina Slinkard, Peggy Hopkins, Marie Beck, Mildred Beeson, Evadna Beeson, Barbara Neeley, Jewell Powell, Evelyn Dryer, Jean Anderson, Joy Marlone, Dorothy Starkey, Marjorie Banks, Betty Taft, Doris Bradford, Dorothy Bradford, Thelma Long, Norma Cooper, Jean Adams Helen Towe, Pauline Newton, Geraldine Talbert.



## Band



Soloists: Cornet, Bill LeCompte Lester Purdom Jr.  
Clarinet: Mary Louise Ingram, Kathleen Mote.  
Clarinet Quartet: Mary Louise Ingram, Martha Ingram, Donna Lee Horner and Devere LeCompte.



Back Row: Donna Lee Horner, Martha Jean Rutter, Betty Flood, Wilma Jean Kimball, Jackie Rich, Alicia Chumbley, Ray Rowland, Evelyn Thomas, Emogene Wisman, Peggy Hutton, Doris Seeley, and Bill Stinzi.

Front Row: Mary Ingram, Martha Ingram, Devere LeCompte, Kathleen Mote, Max Edmondson, Joe Preddy, Chuck Purdom, and Bill LeCompte.



# Fundamentals of Music



Music and Art Instructor

LANOLA B. HODGE

Graduate--State Teacher  
College, Springfield, Mo.

Student of Graduate School  
University of Missouri



Small in number, but  
mighty in effort....  
The power of concen-  
tration is evident  
when these students  
turn in original ex-  
ercises as a result  
of study in chords,  
cadences, and compo-  
sition.



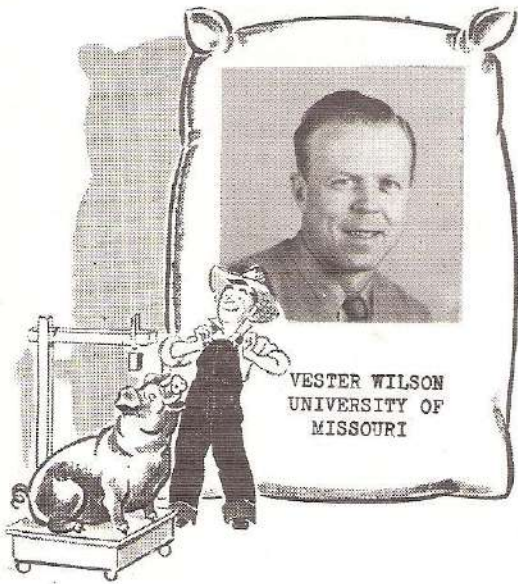
## Art

This department of the Fine Arts, while yet in its infancy, is proud to claim twenty members. Besides the required problems, the class has assisted in the advertising of school events and the designing and painting of a large mural for the school

carnival. The following problems will become a part of the Art Exhibit: modern designing, leather craft, chip carving, water color and oil painting, cartooning, and stenciling.



# Vocational Ag



VESTER WILSON  
UNIVERSITY OF  
MISSOURI

## J. F. A. Officers

- President--Robert Hopkins
- Vice President--Bill Fegg
- Secretary--Doyle Young
- Treasurer--Dick Fegg
- Reporter--Charles Thomas
- Sentinel--Donald Craig



# Science



Apparently, these Biology students are very interested studying the birds and bees. They are:

Jack Loftin, Herbert Legerwood, Carl Hancock, Joy Epperly, Jack Brandt, Wilma Kimbal, Mary Plummer, Wilma Plummer, Willy Jean Painter, Katherine Emes, Emogene Whisman, Wilma Ball, Lorine Coones, Vera Mae Whisman, Ona Bunch, Pat Turner, and Betty Flood.



"Look, pal, we've learned to make Atom Bombs in Science class!"



Since Science and Math are so closely related, it was agreed to divide the class picture and put one-half on the Math page and one-half on the Science page.

BACK ROW: Tom Nicoll, Varl Ball, John Owings, Floyd Tucker, R. L. Smithson, Jessie Spain, Clay Cooper, Earl Dean Hodge, Jessie Fred Smith, Bill Painter, Junior Russell, Douglas Rainwater. THIRD ROW: Dean Davis, Thelma Long, Jean Wallace, Barbara Neely, Betty Lou Antle, Frankie Hopkins, Geraldine Talbert, Mildred Beeson, Wilma Beck. SECOND ROW: Charles Stansberry, Max Edmondson, Morris Bradford, Rex Edmondson, Agatha Epperly, Marjory Ledbetter, Louis Bowser, Charles Freddy. FIRST ROW: Ronnie Keams, Larry Blythe, Marjory Banks, Geraldine Horner, Ben Salyer, Bobbie Moran, Joyce Sivadon, Emogene Anderson, Betty Jo Taff, Reba Stockton, Rita Stockton, Lucille Snyder, Marie Beck.

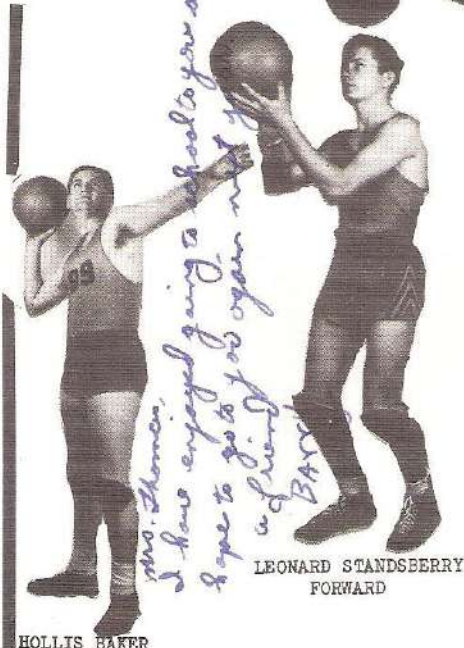
INSTRUCTOR  
WARE STUBBLEFIELD  
B.S. Southwest Missouri State  
University of Arkansas  
Majored in Science and Social Studies





# Basketball

*Mrs. Thomas - I have enjoyed you & English under the best of circumstances. I'll miss you & your team. A floor player.*



HOLLIS BAKER  
GUARD

*Mrs. Thomas, I have enjoyed going to school to you and hope to go to you again next year. I'll miss you & your team.*

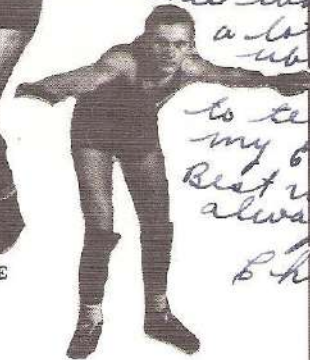
LEONARD STANDSBERRY  
FORWARD



BOB RUSSELL  
CENTER



DON EDIE  
GUARD



CHARLES TRUHITTE  
FORWARD

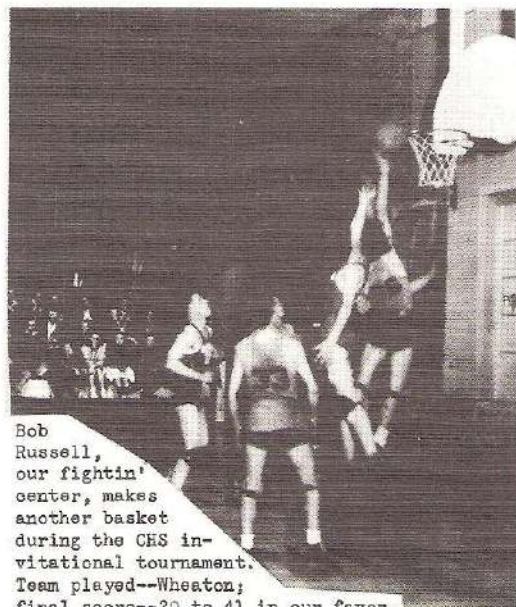
*Mrs. Thomas I shall always remember you as a grand teacher who had a lot of trouble trying to teach me my English. Best wishes always. L. Charles*

## 'A' Team

TEAM PLAYED	THEIR SCORE	OUR SCORE
Alumni of CHS	19	25
Noel	31	28
Pineville	47	36
Anderson	18	39
Verona	13	57
Exeter	22	44
Seligman	16	45
Wheaton	18	28
Rocky Comfort	24	25
Butterfield	17	46
Anderson	27	43
Pineville	20	10
Crane	18	37
Aurora	17	33
Crane	31	54
Noel	41	36
Verona	30	41
Monett	23	35
Clever	39	40
Purdy	27	57
Butterfield	21	23
Rocky Comfort	15	37
Forsyth	25	35
Hollister	38	39
Sparta	31	30
Wheaton	20	41
Hurley	29	47
Ava	39	28
Czark	32	31
Purdy	17	40
Monett	25	53
Exeter	10	85
Seligman	38	63
Wheaton	27	42
Fairview	25	44
Pineville	48	40

Twenty-eight wins and eight losses! That's the record of our "A" team, winner of three tournaments, runner-up of one. These boys made an average of 37½ points each game. An interesting note: the Wildcats won three games by one point and lost two games by one point.

The feature attraction for Cassville basketball fans this season was the annual invitational tournament held at the CHS gym. Such teams as Pineville, Ava, Ozark, and Fairview participated.



Bob Russell, our fightin' center, makes another basket during the CHS invitational tournament. Team played--Wheaton; final score--20 to 41 in our favor.

# The Fighting Wildcats



FIRST PLACE--BUTTERFIELD TOURNAMENT; SECOND PLACE--CRANE TOURNAMENT; FIRST PLACE--AURORA TOURNAMENT  
FOURTH PLACE--CASSVILLE INVITATIONAL TOURNAMENT; FIRST PLACE--BARRY COUNTY SUB-REGIONAL TOURNAMENT

## 'B' Team

Here's the future Wildcat squad for CHS. Made up of Juniors and Sophomores, this second team played about fifteen games this year--and won most of them. Three other boys not on the page who sub for the "B" are Charley Baker, Frank Moudy, and James Ray.



"CHICK" COX



ALFERD TREAT



GLENNON HORNER



LEON EDIE



J. T. TAFF

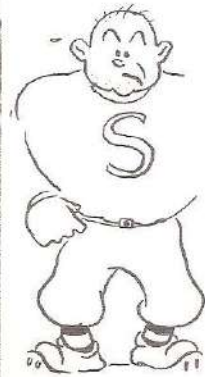


"CHUCK" PURDOM



*Mr. Thomas - I have enjoyed being in dramatics with a well teacher like you Best of luck S.S. 1/11*

# SPORTS



"Slug it, Rip!" That's the battle cry of our softball team. These boys made a fine record this year, winning most of their games and taking first place in the Barry County Championship Tournament held at Exeter last fall.



Presenting...The Barry County Champs! Yessir, these athletic gals won first place at the Exeter tournament last fall.

Betty Ash, Mildred Beeson, Don Parsons (Coach), Bonnie Lee, Hazel Smith, Barbara Neely, Beverly Long, Evadna Beeson, Etta Mae Howard, Lavina Slinkard, Norma Craft, Berna Jean Slinkard, Edna Meryl Smalley, Mary Beth Bradley, Martha Ingram, and Mary Towe.



# Home Ec



**BOYS' HOME ECONOMICS**-----This course is offered every three years for Junior and Senior boys. Some of the points that are stressed in the course are: What shall I wear? How shall I plan, prepare, and serve meals? Where shall I live? When I marry.

The members of the class are: Robert Allison, Hollis Baker, Jack Bush, Don Edie, Max Fields, Charles Galyen, Wayne Harold, Don Hayes, Bob Russell, Chuck Purden, Morris Sims, Harold Timmons, and Glenn Tucker.



## JOHNNA LOUISE KIMMONS

A.B. in HOME ECONOMICS from DRURY COLLEGE  
POST GRADUATE WORK at SOUTHWEST STATE COLLEGE  
B.S. in EDUCATION from UNIVERSITY OF MISSOURI



**HOME ECONOMICS III**-----The Home Ec. III girls have been preparing a home furnishing unit. As this year's project, they have made slip covers for the office and stage furniture. The class members are: Betty Jewell Ash, Barbara Bradley, Thelma Burbridge, Alicia Chumbley, Lucille Cooper, Laven Dodson, Betty Fleed, Rosalie Gibbons, Wilma Jean Kimball, Martha Lewis, Mary Plummer, Wilma Plummer, Freda Leone Prier, Letha Ruddiek, Jeanette Salyer, Frances Sands, Berna Jean Slinkard, Ruth Stapleton, Margarette Smith, Doris Seely, Lilas Towe, Inez Wiseley, Iris Wiseley, Emegene Whisman, and Vera Mae Whisman.





ad equam

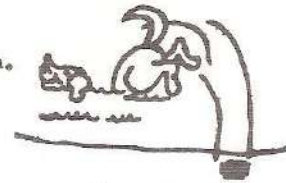
## Latin



Praemium prō nōscēnte linguam Latīnam est scientia melior Anglica.  
The reward for learning the Latin language is a better knowledge of English.

English spelling and grammar become easier to understand as one progresses in Latin and the vocabulary grows by leaps and bounds. Why? Because the derivation of sixty per cent of our English words is Latin.

During an average class the Latin student translates a paragraph of Latin into English, studies grammar, translates English into Latin, and adds a few words of Latin derivation to his English vocabulary.



in equam



## Dramatics



At some time during the year special attention has been focused upon these units: the history of drama, word study and enunciation, Shakespearean plays, pantomimes, make-up. In the picture, Romona Peters, Paula Kost, Olive Patton, Don Edie, Mary Arnold, Betty Banks, Jackie Rich, Clarabelle Owings, Peggy Hutton, Ray Rowland, Martha Rutter, J.T.Taff, Frank Swanson, Bernice Swofford, Donna Meador, J.D.Cox, and Bill Hall are demonstrating the skill they have acquired during the study of make-up.

One of the highlights of the year was the Christmas play which was presented before the student body.

# Social



# Studies



PSYCHOLOGY. Bottom Row: Hazel Hicks, Hollis Baker, Charles Galyen, Don Cooper, Marion Cooper, and Ruby Smith. Middle Row: Geneva Ball, Delmar Hammons, Bob Russell, Jack Bush, Carl Hancock, Norma Lee Talburt, Mary Towe, Max Fields, and Don Hayes. Top Row: Bonnie Lee, Hazel Smith, Ernie Lou Hambest, Willa Jean Painter, Dorothy Willyard, and Mrs. Stubblefield.



MRS. WARE STUBBLEFIELD  
INSTRUCTOR

B.S. From State  
Teachers College

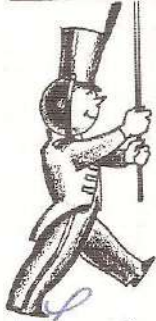
*Is a nice agreeable  
person with whom I  
have enjoyed teaching.  
Best wishes  
Mrs. Stubblefield*



CITIZENSHIP is the study of our government--local, state, and national. In this class about ninety students learn how to become better citizens.

# Commerce

# Bookkeeping



Dear Louise:  
It's people  
like you who  
keep schools  
teaching  
from getting  
dull



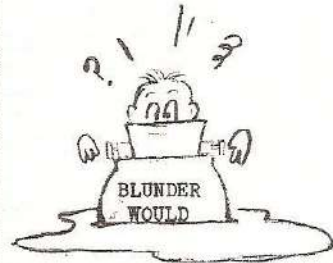
I have enjoyed  
working with  
you. Hazel McNally  
**Typing**

Motto of the Bookkeeping Class--  
"If at first you don't succeed; try, try again."



MRS. HAZEL McNALLY

B. S. in Education  
Southwest State College  
Graduate Work  
University of Arkansas



### SO YOU ARE LEARNING TO TYPE!

As you sit down wan  
and weary,  
With the outlook far  
from cheery---  
If your letters do not look  
as nice as you'd like---  
if the type is jittery and  
blurred, if the characters  
hit light and dark and do  
not keep an even keel---  
don't let it upset you.  
It's probably your machine.  
Hmm!

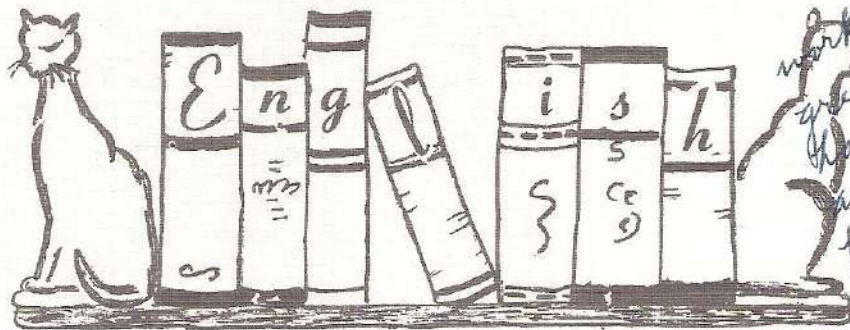


MRS. PEARL CARTER

B.S. in Education  
Southwest State College  
Graduate Work  
in  
Dramatics  
at  
Missouri University



The Freshman English Class, one of the largest in school, is divided into three sections. This picture represents only a small group of the class. Under the capable instruction of Mrs. Carter, these students study the fundamentals of English. Mrs. Carter also teaches Latin and Literature.



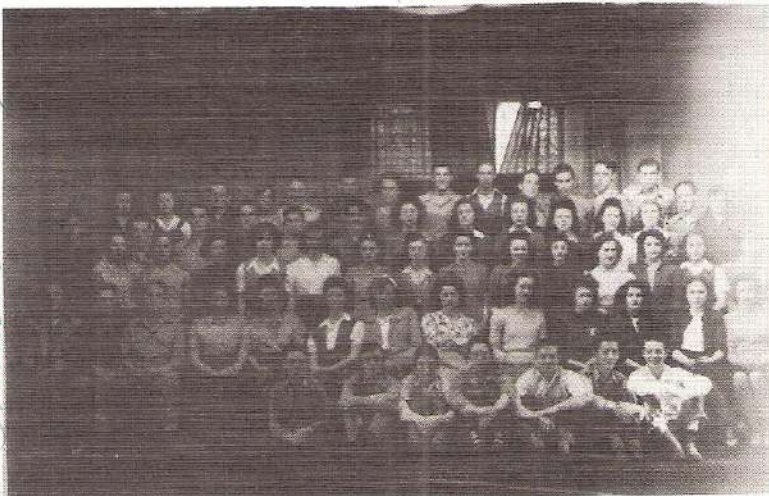
Dear Mrs. Thomas,  
I've enjoyed working with you a great deal, and I have a tremendous amount of respect for you and your work. As a person I like you very much.  
Sincerely,  
Mrs. Carter



ENGLISH III

At the time this picture was snapped, the students were intent on their study of English Mechanics. English III is composed of 73 students who divide their time between the study of Mechanics and Literature. These Juniors and Seniors are guided in their studies under the efficient supervision of Mrs. Louise Thomas

*Dear Louise, I have enjoyed our  
 associations together these 4 years.  
 Very much. Best wishes to you and Doyle. Truman Thompson*



American History students are thrilled by accounts of American heroes--Washington, Jefferson, the pioneers who trekked westward, the millions of soldiers who fought to make and to preserve the country--and just a little bored by the political intrigue and the financial ups-and-downs. Mr. Thompson's American History Class were seventy-five such students.



1519-1620-1914-1066-1688-1215-800-1815

*History*

1492-1776-1941-1861-1898-1519-1620-1914



*TT*

INSTRUCTOR

TRUMAN THOMPSON

Attended:  
 S. T. C.  
 University of Colorado  
 University of Arkansas



A group of students, numbering sixty, stood upon the pinpoint of time known as 1946 and with the STORY OF NATIONS as a guide looked back through the past centuries. They saw the cave man, early Egypt, the empire of Charlemagne, and the development of all the modern nations of the world. Then after they left the world of the past, Current Event papers gave them the picture of the present.

Mathematics



Instructor  
CHARLES BRYANT

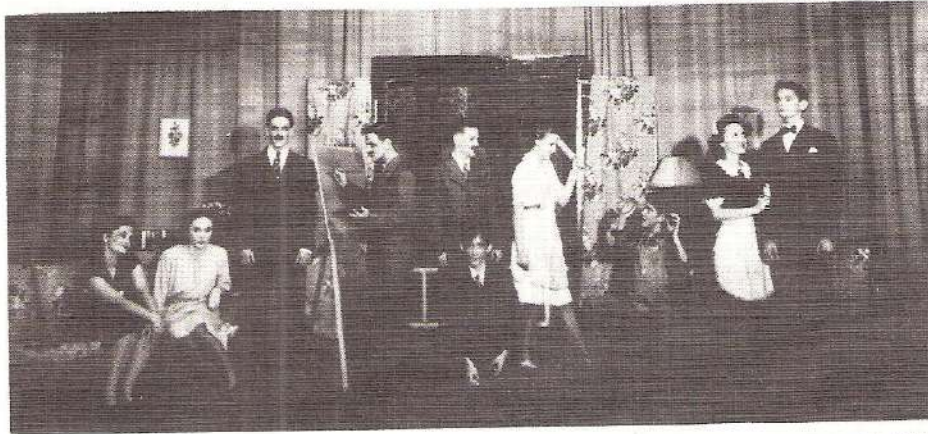
State Life Certificate  
from  
Springfield Teachers  
College



There are three Math courses being taught in CHS this year. Algebra I, General Math for Freshmen, and one-half unit of Algebra II and one-half unit of Trigonometry for the upper classmen.

# Junior Play

## TAKE it EASY!



**Behind the Scenes**

Smile, Mrs. Highgate--your portrait is being painted! Also, your daughter is being wooed by a modern designer, your diamond necklace is being stolen by a daring young jewel thief, your house is being invaded by a self-made detective, your cook is chasing the mischievous yardboy, and your maid is picking the pocket of your dignified butler. Yes, smile!



# Senior Play

## NEW FIRES



"New Fires" is a three-act comedy-drama, requiring Royalty Fee. The following seniors were chosen as characters: Morris Sims, Betty Jean Bryant, Letha Ruddick, Ray Rowland, Paula Jean Kost, Adeline Loftin, Joan Edmondson, Bob Russell, Mary Ingram, Billie Hall, Patricia Turner, Joe Freddy, Rosalie Gibbons, Anne Peterson, and J. T. Taff.



LOUISE THOMAS  
Graduate of  
STC  
Springfield, Missouri

INSTRUCTOR  
of  
English and Dramatics

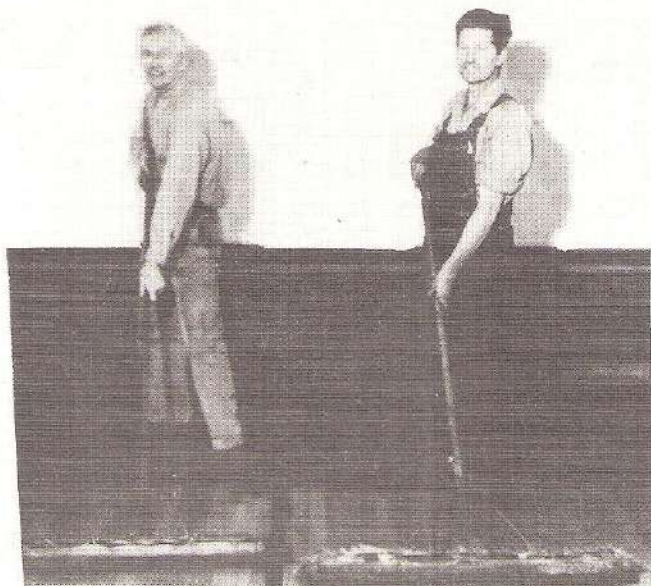


# Peppy

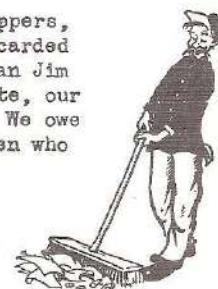
# Dozen



"EXTRA!! EXTRA!! Read all about it! We've got a team and we're gonna shout it!" That's the Peppy Dozen giving our team a real send-off! Under the leadership of Ray Rowland, Martha Ingram, Bill Stintzi, and Alicia Chumbley, this active squad plans and stages pep assemblies and sparks the cheering section at every game.



Who cleans up our candy wrappers, our love notes, and our discarded test papers? None other than Jim Standsberry and Bill Truhitte, our most efficient custodians. We owe a vote of thanks to these men who keep CHS spick and span!



Our kitchen staff is one of the most important functions of the school. Miss Kimmons, Home Ec. instructor, is supervisor, Mrs. A. A. Britain is chief cook, Mrs. Shore is assistant cook, and a dozen or more Home Ec. girls make up the student help. Every school day about three hundred pupils from grade and high school are fed. And the food--delicious!





BEST ALL-AROUND STUDENT--GIRL  
Mary Ingram



BEST ALL-AROUND STUDENT--BOY  
George Skelton



# Personalities Of CHS

The student body elected these pupils to their respective honors by secret ballot during the school year.



FRIENDLIEST BOY  
Bob Russell



MOST COURTEOUS GIRL  
Alicia Chumbley



MOST COURTEOUS BOY  
Glennon Horner



FRIENDLIEST GIRL  
Martha Ingram



NEATEST GIRL  
Margarette Smith



WINNERS--"MOST WIDELY READ" QUIZ PROGRAM  
Billie Hall



Anne Peterson



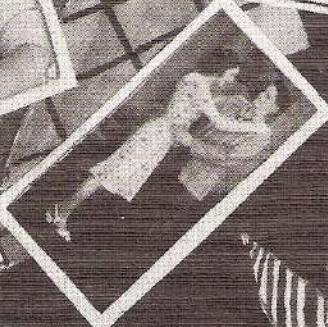
NEATEST BOY  
Charles Williamson



THRU THE KEYHOLE



I'M TIRED AND I WANT TO GO TO BED  
E H H H H E  
E H H H H E



off the RECORD

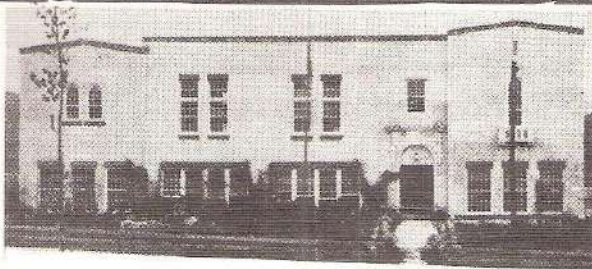
To these patrons of our school.....

M A N Y T H A N K S !

DRYER'S SHOE SHOP	SANITARY MARKET	NEW-MAC ELECTRIC CO-OP, INC.
CASSVILLE REPUBLICAN	DR. J. S. INGRAM	ROYLE ELLIS
ROWLAND'S DRYGOODS STORE	ROBBIE'S CAFE	W. E. HANKINS
ELECTRIC SHOE SHOP	JARVIS INCOME TAX SERVICE	STUBBLEFIELD HARDWARE
SOUTH SIDE BARBER SHOP	HASKINS' FEED STORE	THOMAS ABSTRACT COMPANY
BILL SMITH	PREDDY'S GROCERY	WESTERN AUTO ASSOCIATE STORE
CASSVILLE BAKERY	BLYTHE CLEANERS	GLENN AND BILL'S CAFE
TURNER SERVICE STATION	HARGIS DRESS SHOP	LEWIS EDMONDSON, LOANS
ROLLAND HUTCHINS	COOPER'S GROCERY AND MARKET	DOC'S CAFE
GEORGE ENGLAND	DILLINGER'S CAFE	RAILWAYS ICE COMPANY
BUCK WEAVER	DR. E. L. BLANKENSHIP	IRWIN HOTEL
CASSVILLE VARIETY STORE	RUBY BAKER'S BEAUTY SHOP	SHORE TABACCO STORE
TED P. HOPKINS	WALKER BROTHERS	AUBREY THOMAS
CASSVILLE FURNITURE AND BARGAIN STORE	K. E. BROWN, JEWELER	OZARK FURNITURE COMPANY
	HOTEL BARRY	DR. H. W. STAGGS
	CONOCO SERVICE STATION	COONE'S GROCERY
	FOUR SISTERS CAFE	ELMER'S SHOE SHOP
	JACK BYRD TIRE SHOP	BUEL COX
	PILIAN MOTOR COMPANY	D. H. KEMP
		DR. W. R. McCLURE AND DR. G. A. PURVES



Five orange busses and five swell drivers--every day this combination brings about two hundred students to Cassville High School, rain or shine; sleet or snow! Left to right they are: George Bunch, who drives the Shell Knob route, Floyd Lyale, who drives the Flat Creek route, Joe Marlow, who drives the Golden route, Pete Wiseley, who drives the Jenkins route, and "Hap" Mathis, who drives the Mineral Springs route.



CASSVILLE LUMBER COMPANY  
CASSVILLE, MISSOURI  
phone 140

Compliments of.....  
OZARK THEATER

BARCO ELECTRIC COMPANY  
phone 36  
Westinghouse Dealer

COPE'S GENERAL STORE  
Groceries and Feed  
phone 151

HORNER HARDWARE COMPANY  
Paint and Wallpaper  
phone 195

LeCOMPTE LUMBER COMPANY  
Pittsburgh Paints and Glass  
phone 27

LIFE INSURANCE SERVICE  
H. Carl Seal

Compliments of.....  
WILLIS INSURANCE AGENCY

MILLER DRUG STORE  
Walgreen Agency  
"The Place Where  
We Like To Meet"

Compliments of.....  
DR. E. R. McDANIEL

Compliments of.....  
DR. S. T. SCHLEIER

FULTON'S SERVICE STATION  
Sinclair Gas and Oil

FARMER'S PRODUCE EXCHANGE

Compliments of.....  
JARVIS HATCHERY & FEED  
phone 63

Compliments of.....  
BOB AND CHARLEY  
\*\*\*\*\*  
MAIN STREET  
BARBER SHOP

Buy From YOUR OWN STORE  
Sell To

"That's Co-operation, Not Competition"

Jack Stintzi  
PHILLIPS "66" STATION

J. W. PERRYMAN REALTY COMPANY  
Oldest Firm in Barry County

Compliments of.....  
MARSHALL AND WILLIAMSON GROCERY

Compliments of.....  
CASSVILLE COMMERCIAL CLUB

MAIN STREET GROCERY  
vegetables, meats, groceries  
Phone 9...We Deliver  
"We Appreciate Your Patronage"

Stop and Shop at the Spot  
Where You Get  
Quality and Service  
CASSVILLE HARDWARE COMPANY

Compliments of.....  
BILL HAYLEY MOTORS  
Ford Cars and Tractors

Compliments of.....  
JOHN HOLDEN

Compliments of.....  
THE CASSVILLE MACHINE COMPANY  
Phone 104

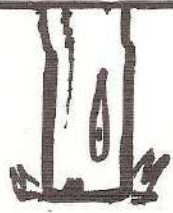
Compliments of.....  
HAWK & PEARL  
(Bland and Missie)

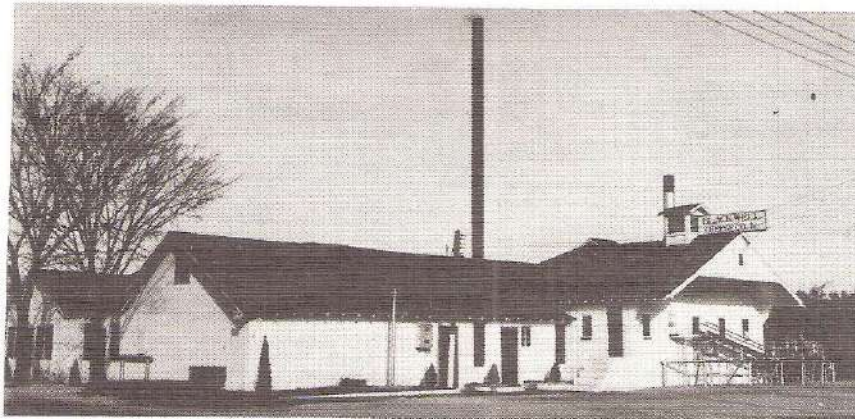
Compliments of.....  
ROY EDMONDSON, STOCKMAN

Thanks!

HUTTON ELECTRIC COMPANY  
General Electric Company  
phone 89  
Light Fixtures--Wiring Materials

Compliments of.....  
JOHN O. SANDERS, LAWYER





BLACKWELL CHEESE COMPANY



*Koon Funeral Home*



W. D. KOON Phone 57 W. C. KOON

*Cassville, Mo.*

MRS. W. D. KOON

WOOTEN'S DRUG STORE

Rexall

Marion Wooten--Boss



MRS. MARION WOOTEN  
"The Boss' Boss"



CHARLES WOOTEN  
"The Future Boss"



"Under Direct Supervision of U. S. Government.  
Member of Federal Reserve System.  
Member Federal Deposit Insurance Corporation."

Service - Courtesy - Reliability

\*\*\*\*\*  
\* BLACKLACK MOTOR COMPANY \*  
\* \* \* \* \*  
\* Sales  Service \*  
\* \* \* \* \*  
\* Wrecker Service \*  
\*\*\*\*\*



**129**  
**N.W. THIRD STREET**

**SEMCO COLOR PRESS**

**OKLAHOMA CITY,**  
**OKLA.**

